

# Accessories



**Magnetic Lock**  
12/24V DC. 1100 lb holding force. Secures the gate(s) closed.



**RLD-24 Loop Detector**  
A safety device that stops the gate from closing on a vehicle.



**Chain Drop Box**  
Mechanical chain release fire box designed for use on sliding gates.



**RAMSET Fire Box**  
Allows the fire department to open your gate in the case of an emergency.



**BBS-Battery Back-Up System**  
1000 lb capacity. Opens the gate when power is lost.



**Key Switch Box**  
Suitable for use on entry doors where access is restricted by a key.



**Thru-Wall Extension**  
Extends drive sprocket & idlers thru-wall. Keeps operator inside property/ building.



**Post Mounts**  
1/4" angle iron flats. 3/16" square tubing legs. Used to mount the operator off the ground.



**Premium Guide Rollers**  
Heavy duty UHMW rollers. Lengths: 4", 6", 12" Colors: Black or White



**Adjustable Guide Rollers**  
Heavy duty UHMW rollers adjust to fit any gate. Lengths: 4", 6", 12"



**RPI (Ramset Power Inverter)**  
Maintains power to your operator and accessories when the main power is lost. 750W output.



**Goose Necks**  
Square - 14 ga. Available in 48" padmount or 66" in-ground. Used for mounting keypads, phone entry systems, card readers...etc.

**10-Year Warranty Residential**

**7-Year Warranty Commercial**

**DISTRIBUTED BY:**



**Easy Installation**



**Heavy Duty**



**Reliable**



**Low Maintenance**



[www.ramsetinc.com](http://www.ramsetinc.com)



**RAM 1000**

Commercial Industrial

**RAM 100**

Residential Commercial



**RAM 5500**

Commercial Industrial



Designed to satisfy the need for gate operators in high traffic areas, such as residential gated communities, public storages, industrial parks and government facilities.



## SPECIFICATIONS

<b>MAXIMUM GATE WEIGHT:</b> 700 lbs
<b>MAXIMUM GATE TRAVEL:</b> 20'
<b>GATE TRAVELING SPEED:</b> Approx. 1' per sec.
<b>CYCLES:</b> Continuous <b>SHIPPING WEIGHT:</b> 110 lbs
<b>OPERATING TEMPERATURE:</b> -10° F to 160° F

### Electric Motor

1/2 Hp, 115 VAC 4.5 amp  
50/60Hz. with high speed ball  
bearings and resettable overload button.

### Heavy Duty Worm Gear

Lubricated in an oil bath for smooth  
and quiet operation.

### Limit Switches

Mechanical adjustment for  
accurate gate stop settings.

### Cover

High-impact resistant charcoal  
gray polyethylene.

### Cover Dimensions

H: 22" L: 14 1/2" W: 15"

### Finish

Gold/Zinc plated to inhibit corrosion.



### Emergency Foot Pedal Release

This mechanism disengages the gate from the  
operator to allow easy manual opening and closing  
of the gate during power outages and emergencies.

## RAM 100

Residential / Commercial

## SPECIFICATIONS

<b>MAXIMUM GATE WEIGHT:</b> 1500, 2500 lbs
<b>MAXIMUM GATE TRAVEL:</b> 45'
<b>GATE TRAVELING SPEED:</b> Approx. 1' per sec
<b>CYCLES:</b> Continuous <b>SHIPPING WEIGHT:</b> 135 lbs
<b>OPERATING TEMPERATURE:</b> -10° F to 160° F

### Electric Motor

3/4, 1 Hp - 115 VAC. - 8.5, 9.8 amp.  
50/60Hz. with high speed ball  
bearings and resettable overload button.

### Heavy Duty Worm Gear

Lubricated in an oil bath for smooth  
and quiet operation.

### Limit Switches

Mechanical adjustment for  
accurate gate stop settings.

### Cover

High-impact resistant charcoal  
gray polyethylene.

### Cover Dimensions

H: 27" L: 16" W: 16 1/2"

### Finish

Gold/Zinc plated to inhibit corrosion.



### Emergency Foot Pedal Release

This mechanism disengages the gate from the  
operator to allow easy manual opening and closing  
of the gate during power outages and emergencies.

## RAM 1000

Commercial / Industrial



### Emergency Foot Pedal Release

This mechanism disengages the gate from the  
operator to allow easy manual opening and closing  
of the gate during power outages and emergencies.

## SPECIFICATIONS

<b>MAXIMUM GATE WEIGHT:</b> 1000 lbs
<b>MAXIMUM GATE TRAVEL:</b> 45'
<b>GATE TRAVELING SPEED:</b> Approx. 1' per sec
<b>CYCLES:</b> Continuous. <b>SHIPPING WEIGHT:</b> 125 lbs
<b>OPERATING TEMPERATURE:</b> -10° F to 160° F

### Electric Motor

1/2 Hp, 115 VAC. 4.5 amp.  
50/60Hz. with high speed ball  
bearings and resettable overload button.

### Heavy Duty Worm Gear

Lubricated in an oil bath for smooth  
and quiet operation.

### Limit Switches

Mechanical adjustment for  
accurate gate stop settings.

### Cover

High-impact resistant charcoal  
gray polyethylene.

### Cover Dimensions

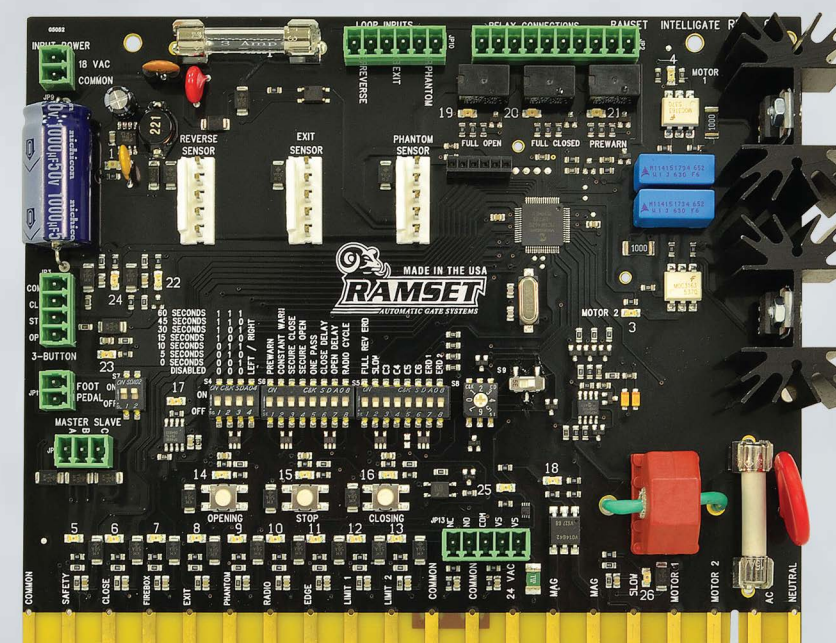
H: 27" L: 16" W: 16 1/2"

### Finish

Gold/Zinc plated to inhibit corrosion.

## RAMSET "Intelligate" Control Board

UL 325 2016 Edition 6



The Intelligate control board is the most advanced gate controller in the industry, putting Ramset ahead of the competition when it comes to reliability and number of features. It is controlled by a programmable microprocessor that reads and precisely executes all functions of the control board. Some of the features of the control board:

- \* Automatic close timer
- \* Pre warning alarm relays
- \* Constant warning alarm relays
- \* Manual or self adjusting ERD
- \* Dual gate communication capability
- \* Secure close
- \* Anti-tailgating/One pass system
- \* Radio cycle (open, stop & close)
- \* Open & close delays
- \* Indicator lights for easy troubleshooting
- \* Plug in loop detectors
- \* Left/Right installation switch